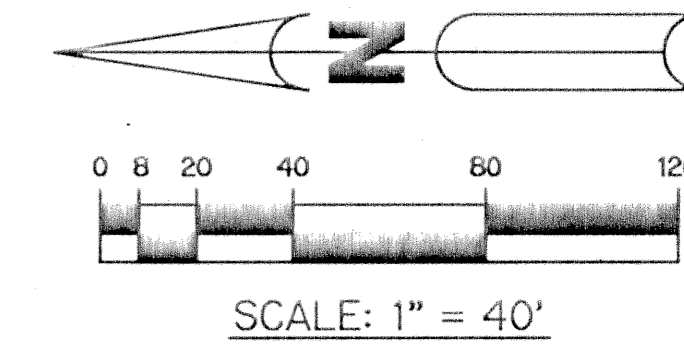


MAPLE ISLAND

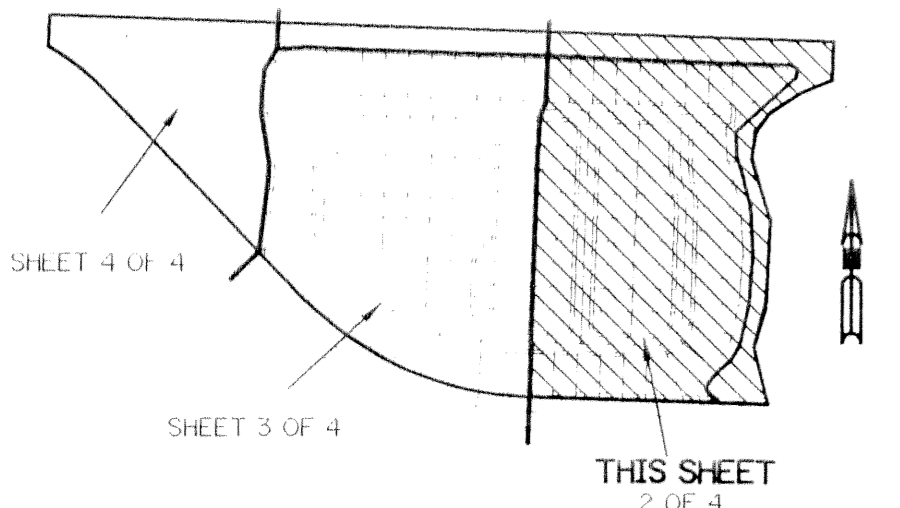
A PARCEL OF LAND LYING IN SECTION 11, TOWNSHIP 41 SOUTH, RANGE 42 EAST, TOWN OF JUPITER, PALM BEACH COUNTY, FLORIDA, AND BEING A REPLAT OF A PORTION OF PARCELS "A" AND "E" OF MAPLEWOOD PHASE ONE, PLAT BOOK 42, PAGES 63 THROUGH 65, PALM BEACH COUNTY, FLORIDA

SHEET 2 OF 4 MAY, 1995

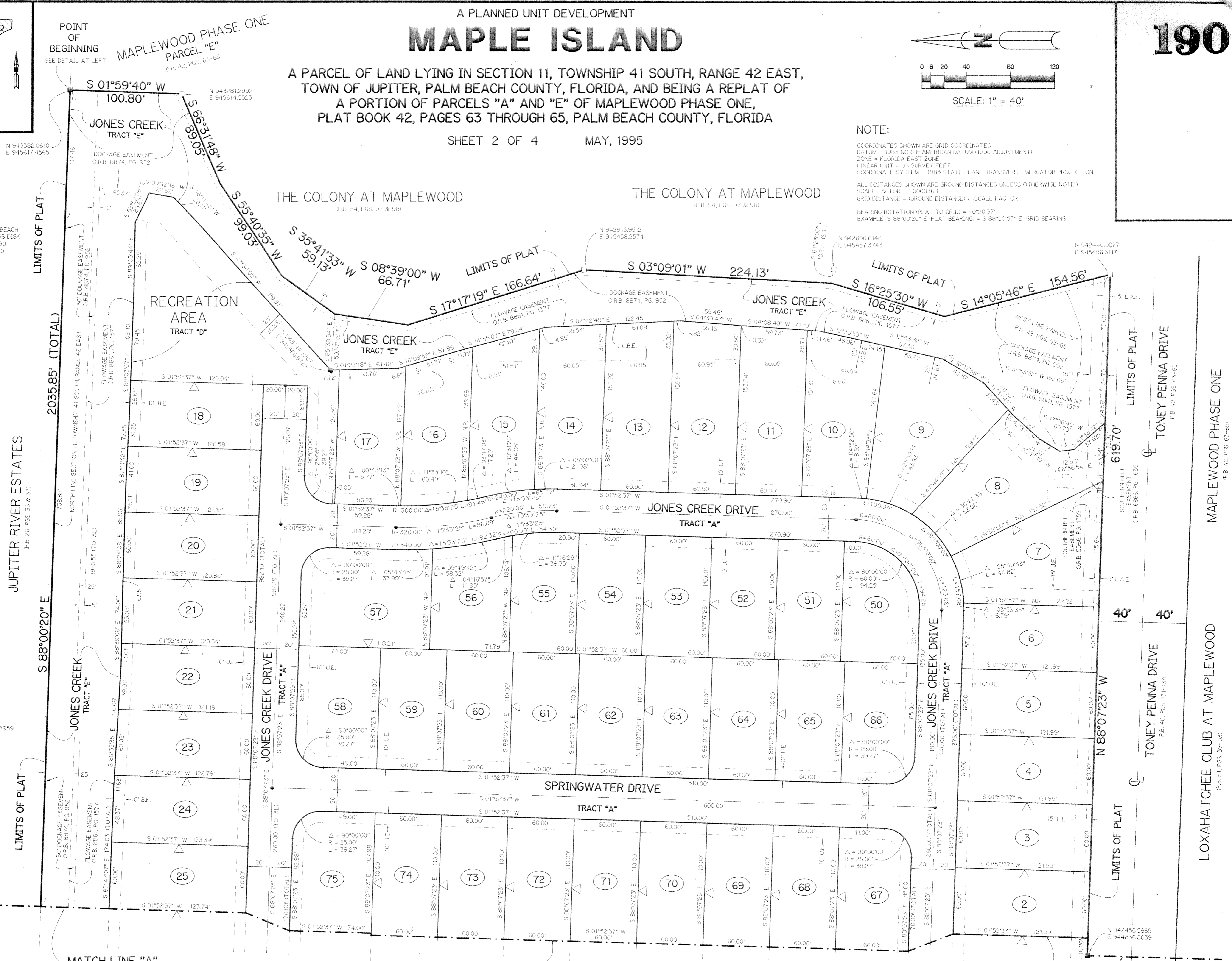


NOTE:

COORDINATES SHOWN ARE GRID COORDINATES
DATUM - 1983 NORTH AMERICAN DATUM (1990 ADJUSTMENT)
ZONE - FLORIDA EAST ZONE
LINEAR UNIT - US SURVEY FEET
COORDINATE SYSTEM - 1983 STATE PLANE TRANSVERSE MERCATOR PROJECTION
ALL DISTANCES SHOWN ARE GROUND DISTANCES UNLESS OTHERWISE NOTED
SCALE FACTOR - 1.0000368
GRID DISTANCE = (GROUND DISTANCE) x (SCALE FACTOR)
BEARING ROTATION (PLAT TO GRID) = -0°20'37"
EXAMPLE: S 88°00'20" E (PLAT BEARING) = S 88°20'57" E (GRID BEARING)



KEY MAP NOT TO SCALE



LEGEND:

- - FOUND PERMANENT REFERENCE MONUMENT, PLS #959
- - PERMANENT REFERENCE MONUMENT, PLS #4190
- - PERMANENT CONTROL POINT, PLS #4190
- △ - DELTA ANGLE
- - ARC LENGTH
- J.C.B.E. - JONES CREEK BUFFER EASEMENT
- B.E. - BUFFER EASEMENT
- L.E. - LANDSCAPE EASEMENT
- NR. - NOT RADIAL
- N.T.S. - NOT TO SCALE
- O.R.B. - OFFICIAL RECORD BOOK
- P.B. - PLAT BOOK
- P.G.S. - PAGES
- P.L.S. - PROFESSIONAL LAND SURVEYOR
- P.S.M. - PROFESSIONAL SURVEYOR & MAPPER
- R. - RADIUS
- R/W. - RIGHT-OF-WAY
- S.T. - SURVEY TIE
- U.E. - UTILITY EASEMENT
- L.A.E. - LIMITED ACCESS EASEMENT
- △ - INDICATES ZERO LOT LINE

SUBDIVISION * Maple Island
 BOOK 75 PAGE 190
 FLOOD ZONE FLOOD MAP *
 QUAD * ZONING
 SE ZIP CODE
 PUD NAME T/Jupiter 11/41/42

THIS INSTRUMENT PREPARED BY
 WILBUR F. DIVINE P.S.M. #4190 STATE OF FLORIDA
 LAWSON, NOBLE AND ASSOCIATES, INC.
 ENGINEERS PLANNERS SURVEYORS
 WEST PALM BEACH, FLORIDA

MATCH LINE "A"
 SEE SHEET 3 OF 4

MATCH LINE "A"
 SEE SHEET 3 OF 4

MATCH LINE "A"
 SEE SHEET 3 OF 4